

MONTHLY MEMBERSHIP PROGRESS REPORT

LOCATION NEBRASKA

District 38 L

Results as of: 6/30/2023

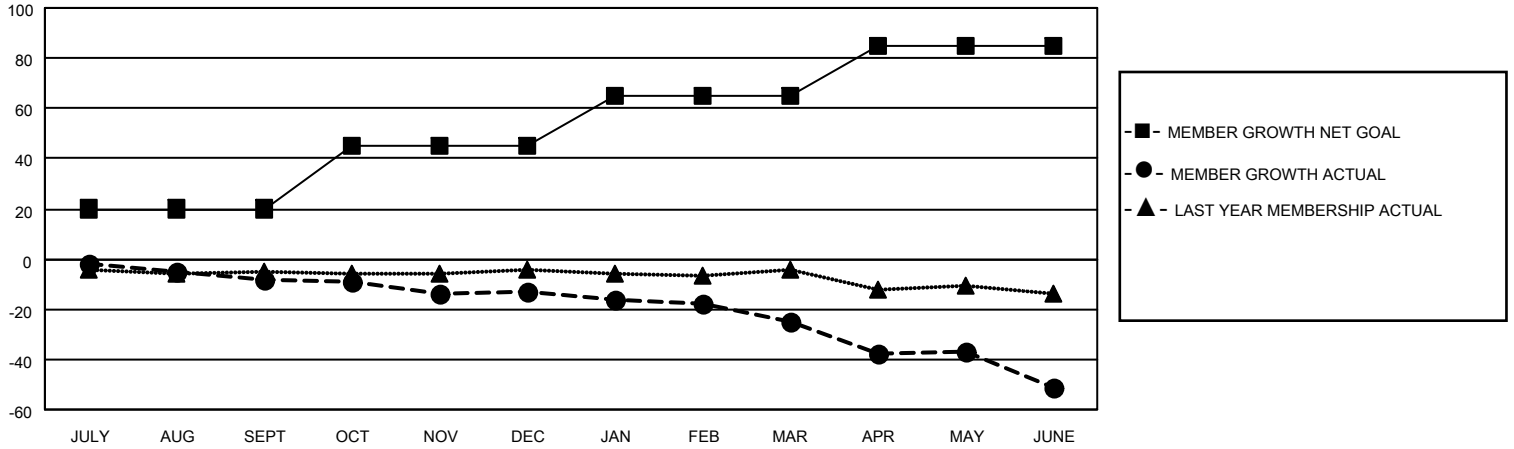
Clubs			
RESULTS FOR 2022-2023			
QUARTER	NEW CLUB GOAL	NEW CLUBS	DROPPED CLUBS
JULY/AUG/SEPT	0	0	0
OCT/NOV/DEC	0	0	0
JAN/FEB/MAR	0	0	0
APR/MAY/JUNE	1	0	2

Members			
RESULTS FOR 2022-2023			
QUARTER	MEMBER GROWTH NET GOAL	MEMBER GROWTH ACTUAL	DROPPED MEMBERS ACTUAL (including transfers)
JULY/AUG/SEPT	20	7	15
OCT/NOV/DEC	25	3	8
JAN/FEB/MAR	20	4	16
APR/MAY/JUNE	20	19	40

GOALS AND ACTUAL NEW CLUBS CUMULATIVE



GOALS AND ACTUAL MEMBERS CUMULATIVE



DROPPED CLUBS: 2	
<u>DROPPED MEMBERS</u>	
DECEASED	9
CLUB CANCELLED	13
OTHER	57
TOTAL	79

13 CLUBS OF 38 ADDED 1 OR MORE NEW MEMBERS

[CLICK HERE FOR CUMULATIVE MEMBERSHIP DATA](#)

<u>GENDER DISTRIBUTION</u>	
MALE	537 (72.86%)
FEMALE	200 (27.14%)
NON BINARY	0 (0.00%)
PREFER NOT TO ANSWER	0 (0.00%)
TOTAL FAMILY UNIT MEMBERS	173
FAMILY MEMBERS PAYING HALF DUES	87